

PTA NEWSLETTER



November 2024

AUTUMN TERM NEWSLETTER

Vol 2 Issue 1

WELCOME

Hello and welcome to the Christleton Primary School Parent and Teacher Association (PTA) autumn term newsletter. We would like to start by saying a massive thank you to everyone for all your support and involvement over the past year. Whether you've attended an event, volunteered, donated items, sent your child into school with cake money... thank you!

ANNUAL GENERAL MEETING

Thanks to all those who attended the Annual General Meeting (AGM) on Monday 30th September. Minutes are available on the school website. The next PTA meeting will be on Monday 29th January 2025. Everyone is welcome!

INTRODUCTION TO TEAM

The PTA is formed of volunteers from across the school community working together to raise much needed funds and to make a difference to the children and school through fun and creative initiatives and events. The PTA has a core team, class representatives and an amazing group of parent volunteers helping to organise events and generate new fundraising ideas.

The positive impacts on the school, children and wider school community are huge and we are lucky at Christleton Primary to have such a supportive bunch of parents and carers.

What's in this issue:

- Welcome
- Introduction to the core team
- AGM
- Fundraising summary
- Ways to support your PTA



Key dates:

Christmas Fair & Raffle 29/11/24
Wreath Making Workshop 5/12/23
Festive Film Night 11/12/24
Next PTA meeting 27/01/24

More details available via the event flyers posted on our webpage, Facebook or the Spider app .

Core Team:

Chair - Caroline Hall
Vice Chair - Loucy Bolshaw
Treasurer - Becky Lawrance
Secretary - Elsitia Payne

Class Reps:

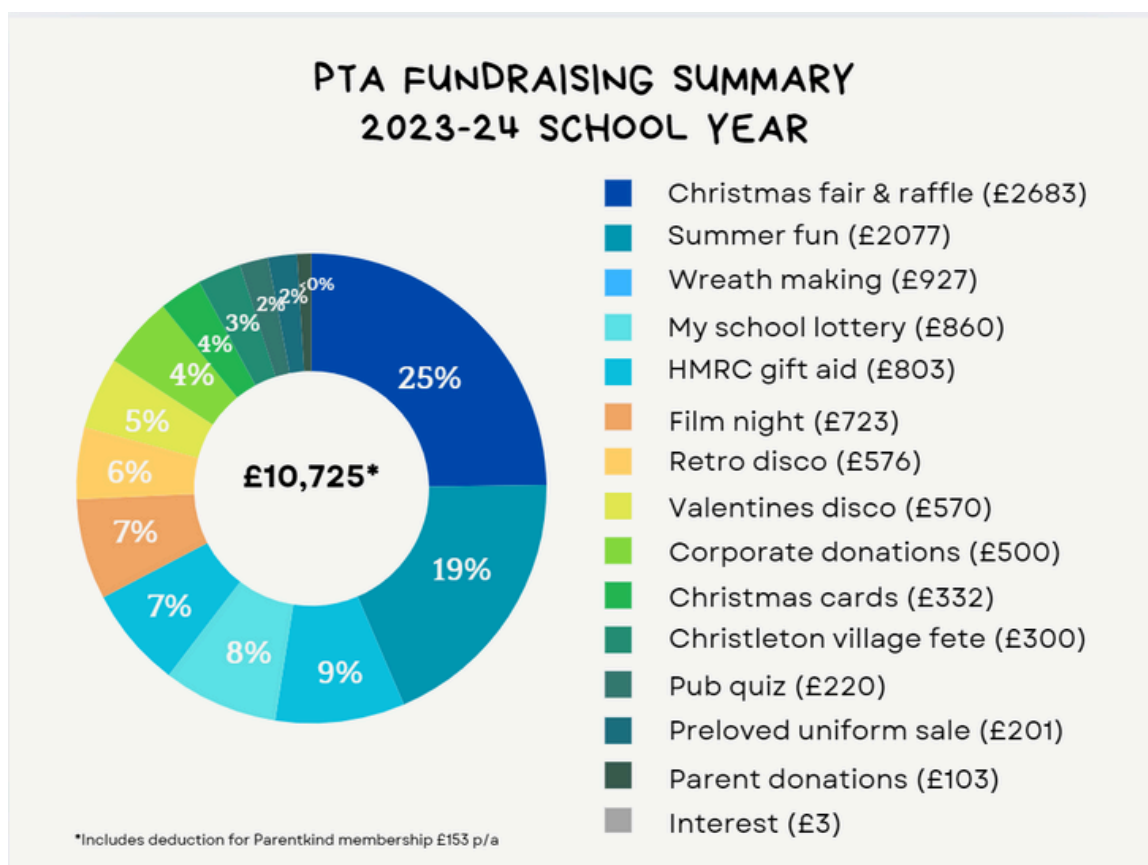
Reception - Becky Lawrance
Y1- Katie Muhashash
Y2 - Maria Coulthard
Y3 - Sarah Felix-Rogers
Y4 - Sam Williams
Y5 - Rebecca Henderson
Y6 - Ceri Wheadon



FUNDRAISING SUMMARY

The PTA is a registered charity (no. 518310) and all proceeds are directly invested back into the school for the benefit of the children.

Last year, the PTA raised a fantastic **£10,725** and the chart below shows you how this money was raised throughout the year. This would not have been possible without the support and kindness of the parents, carers, teachers and wider school community, so thank you again!



Money raised by the PTA has either funded or part-funded numerous projects and equipment in recent years including:

- Installation of the school library
- Installation of a sound system and stage lighting
- Creation of the forest school
- Installation of playground markings on both playgrounds
- Installation of play equipment (including the field fitness trail, fitness trail on the KS1 playground and outdoor gym on the KS2 playground)
- Purchase of 30 iPads
- Providing book bags for new starters
- Subsidised theatre trips
- Contributions to enhancements for each class
- Ice lollies during health week.

UPDATE FROM MR MITCHELL

The school would like to take the opportunity to express our gratitude for your support at our PTA events over the past few years. Your involvement has been incredible, and as a result, we have been able to raise a significant sum that will undoubtedly enhance the school experience for all of our pupils.

On behalf of the entire staff and pupil body, we would like to thank the PTA for their tireless work. They have organised fantastic events that have not only brought our community together but have also generated substantial funds to support our school's initiatives.

You may be aware that we decided to hold off on spending a significant sum last year, with the aim of building up some capital to complete a more substantial project this academic year. Following consultation with the staff, pupils, and the PTA, we have now finalised the plans for how these funds will be utilised.



Firstly, we will be installing an outdoor classroom by our forest school. This 5-metre hexagonal construction will provide seating and have windows, and walls, offering a point of shelter for our pupils during break-times and forest school sessions, regardless of the weather.

Secondly, the PTA funds will contribute to the cost of bringing an external, outdoor specialist teacher into the school to deliver our forest school sessions. This teacher has further enhanced our provision and added additional elements such as first aid, survival, and well-being into our outdoor curriculum offer.

Thirdly, we will be installing astro-turf in the outdoor areas of EYFS, Year 1, and Year 2, as well as on the 'muddy' areas of the KS2 playground. This will enable these areas to be used throughout the year, regardless of the weather conditions.



Finally, on the KS1 playground, we will be installing an investigation station. This multi-height area will provide surfaces for our pupils to play with their toys and be creative.

We have given a great deal of thought to these projects, and we firmly believe that the funds will be used in a way that enhances the experiences of all of our pupils and improves their opportunities.

Once again, we would like to express our gratitude for your support at the PTA events. The funds generated make such a significant difference to our school and our pupils.

Mr Mitchell
Headteacher

CHRISTMAS FAIR 29/11/2024



The highlight of the autumn/winter term is the very festive Christmas Fair to be held on Friday 29th November between 3:20-5:30 pm within the school grounds. There will be lots of fun stalls and activities for all ages, as well as delicious food and drinks!

Please can we ask for donations on the below dates:

- **Friday 8th November - bottles, chocolates and sweets**
- **Friday 15th November - new or as new gifts, toys, games and books and teddies for the tombola**
- **Friday 29th November - cakes and lucky jars**

(Drop-off stations will be located on the KS2 playground on these dates)

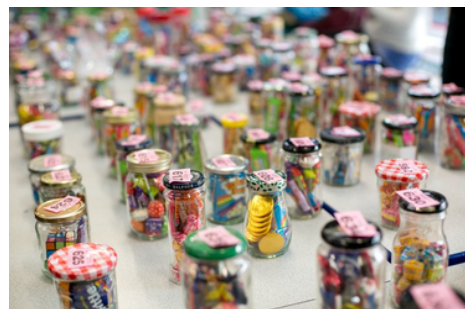
Also, as a thank you for your kind donations and support the day of the fair Friday 29th November will be a **non - school uniform day!**

NEEDED - Volunteers and a Santa

As with all events, we are totally reliant on the school community to help us and volunteer to run these events and make them a success. For the Christmas fair this includes a Santa (full suit provided). So if you can please help us by sparing some time to help wrap up gifts, set up the hall, run a stall on the day or save Christmas by being our Santa, we would be incredibly grateful!

Lucky Jars

These were a huge success last year. They can be filled with wrapped sweets, chocolates, trinkets, little toys, stickers anything really! Here is an image from another school fair for inspiration!



Raffle Prizes

If any local businesses would like to donate a prize for the Christmas raffle, that would be hugely appreciated. Please contact the class reps for more information.

Sponsored stands

This year we also have a limited number of stands for local business to showcase and sell their produce or crafts. Please contact the PTA core team for information.



PRE-LOVED SCHOOL UNIFORM REQUEST FORM

The PTA team have created an online form for parents and carers to submit requests for pre-loved uniform items. For this term can all requests be submitted by **2nd December 2024**.

We will do our best to find what you are looking for but this is a first come first served service and stock will vary throughout the year based on donations received. Each item is priced between (£1-2) and donations can be made in cash or via bank transfer.

We have also placed a permanent wooden collection box in the school reception area for parents to donate any pre-loved uniform throughout the year.

[Complete Uniform Form](#)



FEEDBACK FORM

The PTA team have also created an online feedback form for parents and carers to complete, provide feedback on all PTA events and to share ideas for future fundraisers.

We would also love to hear what parents think about the proposed new outdoor space and cookery classes or if there are any other suggestions for how we can help contribute to the school and the children's learning.

You can of course also contact the PTA team directly either via the core team or the class representatives.

[Complete Feedback Form](#)



OTHER WAYS TO SUPPORT THE PTA

School lottery



Your School Lottery is an exciting weekly lottery that raises money by giving 40p out of every £1 back to the school. A ticket costs just £1 per week, with a jackpot prize of £25,000 won every Saturday!

<https://www.yourschoollottery.co.uk/lottery/school/christleton-primary-school-association>

Easyfundraising



Easyfundraising partners with over 7,000 brands, who donate a % of what you spend online back to the school. It's completely free to join, and it doesn't cost you any extra, as the cost is covered by the brand.

<https://www.easyfundraising.org.uk/>

Match funding schemes



A match funding scheme is where organisations pledge to match a sum of money relating to the amount raised at an event or stall by the employee or donated to a charity. Please speak to your employers to find out whether a scheme is already in place or if they would be willing to set one up.

<https://www.pta.co.uk/fundraising/funding-sources/match-funding-faqs/>

Donations

Donations can also be made directly to the PTA via the below details and please remember to quote your name as the reference. Thank you!

Christleton Primary School Association (CPSA)

Sort code: 30-91-92

Account no: 02726470

CPSA Registered charity no. 518310

