



Be the best you can be

Christleton Primary School

Quarry Lane
Christleton
Chester
CH3 7AY
01244 455288

Friday 19th July 2024

Dear Parents / Carers

A big thank you

Firstly to start, a big thank you for all of your support this academic year. Parental support is invaluable and we thank you for your contribution to the school and your child's education.

Thank you also to all of those who have gone above and beyond, this may be being part of the PTA, supporting at events, cutting the school hedge, maintaining the school flower beds, hearing readers, attending trips or providing lifts. These people can often be unnoticed but have such a huge impact on the life of the school, what we are able to offer and the experiences of our children. The staff and children are very much indebted to you. We wish all of you a fantastic, safe and enjoyable summer break.

Year six children

On Wednesday we will bid farewell to our Year 6 class of 2024. We will say our goodbyes in person next week but wanted to say how proud of them we are.

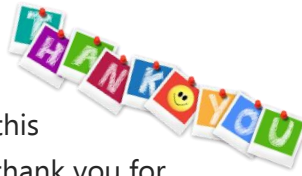
As a teacher, it is a privilege to see children develop over their time in school and grow into confident young people ready to take that next step in their education. This cohort is no exception, they have worked incredibly hard this year, demonstrating resilience and determination in equal measure. Good luck in high school, we sure you will go on to achieve fantastic things.

A thank you to the staff

As a parent myself, I appreciate that you only see a snapshot of the work that goes into planning, preparing, delivering and assessing children's work.

However, the job of a teacher, teaching assistant or the support staff in school, is so much more than this. We are very fortunate to have such dedicated professionals who create such engaging and enriching learning experiences for our children. They care for each and every member of our school community, ensuring their wellbeing and supporting them to grow and develop.

As we reach the end of the year, I would just like to say a huge thank you for the incredible work our teachers and support staff do each and every day.



2nd September

Staff training Day.

3rd September

School re-opens for children.

12th - 13th September

Year 4 residential to Pentre

23rd - 27th September

Scholastic Book Fair

24th & 25th September

Fun Food Chef in School

28th - 1st November

Half term

4th November

School re-opens for children

11th-14th November

Anti-bullying week

15th November

Children in Need

26th November

Potential autumn term parents' evening

28th November

Potential autumn term parents' evening

**Thank
You!**

Congratulations

It is with great pleasure that we share the news that Miss Grogan, our Year 1 teacher, will be getting married at the start of the summer holidays.

We wish her a truly fantastic day and a wonderful honeymoon. We look forward to welcoming her back in September as Mrs. Hall.



The Last Week

As we approach the last few days we would like to ensure that things run as smoothly as possible. Below is an overview of the week and anything you need to be aware of.

Monday



Your child's end of year report will be sent via email. This report will highlight your child's strengths and any areas for development. It will also provide an overview of the standard they are working at and their attendance.

If your child is in EYFS, Year 1 or Year 6 the report will also contain your child's statutory assessment data.

Tuesday

Please can you send your child into school with a plastic bag. We are aiming to clear the cloakrooms and children's trays on Tuesday so it is likely that quite a few things may be sent home.



Wednesday



On the last day of term, the children are invited to bring a game into school to play with their friends. As previous years, please can we request that expensive electronics are not sent in as we would hate for them to get damaged. Please also ensure that games are named so they can be returned at the end of the day. It would also be appreciated if you can only send in what your child needs for the day so the risk of items being left in school is reduced.

Term Dates 2024-2025

In advance of next academic year, please find the term dates for 2024-2025. These dates can also be accessed on the school website. Please notes there are a couple of small changes e.g. INSET days to be aware of.

Lunch Menu Autumn Term

Our new lunch menu can be access on the school website and has also been attached to this message. We hope that the new menu, part chosen with the children, provides something for everyone. A big thanks to Diane and her team for their fantastic food, it is very much enjoyed by the children.



Fundraising

Finally, **A HUGE thank you to our PTA** and all those parents who support and attend events. The work of the PTA is phenomenal and so, so appreciated by the staff, children and school community. It contributes significantly to what we are able to offer in increasingly difficult times.

Aside from the monies raised, it also provides some memorable experiences from discos and film nights to the summer fun, all memorable events that have brought the school community together.

We have exciting things planned over the next year using the funds raised which will positively impact all the children's educational experiences. We will communicate more about these projects in due course. Thank you all for your support!

School Attendance

Thank you for your continued support to ensure our children attend school and make the most of the opportunities on offer.

The attendance overview for this academic year is as follows.



Year Group	Attendance %	Difference
Reception	93.5%	
Year 1	97.3%	
Year 2	97.2%	
Year 3	96.9%	
Year 4	96.3%	
Year 5	95.6%	
Year 6	95.5%	
Whole School	97.5%	

Recent Letters



Theme	Method	Recipients	Date
Team Sports Day	Spider	All	18.07.24
School Dinner Menu	Spider and Email	EYFS-Yr.5	12.07.24





Christleton Primary School

School term dates 2024-2025

Autumn Term 2024

Monday 2nd September

Tuesday 3rd September
Friday 25th October

INSET (Staff training day)

Pupils return to school
School closes for half term

Half term:

Monday 28th October - Friday 1st November

Monday 4th November
Friday 20th December

School reopens
School closes for Christmas holidays

Christmas holiday:

Monday 23rd December - Friday 3rd January

Spring Term 2025

Monday 6th January

Tuesday 7th January
Friday 14th February

INSET (Staff training day)

School reopens
School closes for half term

February half term:

Monday 17 February - Friday 21 February

Monday 24th February
Friday 4th April

School reopens
School closes for Spring Break

Spring break:

Monday 7th April – Monday 21st April (Inc. bank hol.)

Summer Term 2025

Tuesday 22nd April
Monday 5th May
Friday 23rd May

School reopens
Bank holiday
School closes for half term

Half term:

Monday 26th May - Friday 30th May

Monday 2 June

Tuesday 3 June

INSET (Staff training day)

School reopens

Friday 18 July

Monday 21 July

Tuesday 22 July

School closes for summer holiday

INSET (Staff training day)

INSET (Staff training day)



WEEK 1

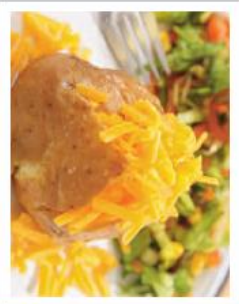
Monday

Choice 1



Breaded Chicken Goujons served with Potato Wedges & Seasonal Vegetables

Choice 2



Jacket Potato with a Selection of Fillings served with a Side Salad

Dessert



Apple Pie & Custard

Tuesday



3 Cheese & Tomato Pasta served with Garlic & Herb Bread and Seasonal Vegetables



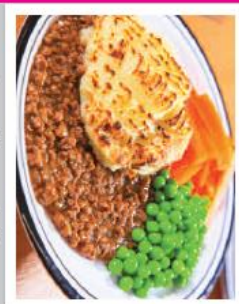
Deli Choice of Breads with a Selection of Fillings served with a Side Salad



Chocolate Mudslider

VEGETARIAN VERSION OF THE ABOVE AVAILABLE DAILY

Wednesday



Cottage Pie served with Seasonal Vegetables



Jacket Potato with a Selection of Fillings served with a Side Salad



Fresh Fruit Salad

Thursday



Chinese Chicken Curry served with Rice, Naan Bread & Seasonal Vegetables



Deli Choice of Breads with a Selection of Fillings served with a Side Salad



Noble Biscuit

Friday



Cheese & Tomato Pizza served with Chips & Peas or Baked Beans



Jacket Potato with a Selection of Fillings served with a Side Salad



Snickers Doodle Biscuit

AVAILABLE DAILY - UNLIMITED SALAD, FRESHLY BAKED BREAD, FRUIT YOGHURT, FRESH FRUIT PLATTER & CHILLED WATER. FOR ALLERGEN INFORMATION, PLEASE ASK ONE OF OUR CATERING TEAM. ALL THE ABOVE DISHES ARE SUBJECT TO AVAILABILITY.

LUNCH MENU



Christleton Primary School



01244 455288



www.christletonprimarieschool.co.uk



admin@christletonprimary.cheshire.sch.uk



@christletonpri

WEEK 2

Choice 1

Choice 2

Dessert

Monday



Beef Burger served in a Bun with Potato Wedges & Seasonal Vegetables or Baked Beans



Jacket Potato with a Selection of Fillings served with a Side Salad



Sticky Toffee Pudding served with Custard

Tuesday



Pasta Bolognese served with Garlic & Herb Bread and Seasonal Vegetables



Deli Choice of Breads with a Selection of Fillings served with a Side Salad



Wacky Chocolate Cake

Wednesday



Roast Chicken served with Roast/Mashed Potatoes, Seasonal Vegetables & Gravy



Jacket Potato with a Selection of Fillings served with a Side Salad



Fresh Water Melon Wedge

Thursday



Chicken Tikka Masala served with Rice, Naan Bread & Seasonal Vegetables



Deli Choice of Breads with a Selection of Fillings served with a Side Salad



Fruit Mousse

Friday



Fish Fingers served with Chips & Peas or Baked Beans



Jacket Potato with a Selection of Fillings served with a Side Salad



Golden Crunch Cookie

VEGETARIAN VERSION OF THE ABOVE AVAILABLE DAILY

AVAILABLE DAILY - UNLIMITED SALAD, FRESHLY BAKED BREAD, FRUIT, YOGHURT, FRESH FRUIT PLATTER & CHILLED WATER. FOR ALLERGEN INFORMATION, PLEASE ASK ONE OF OUR CATERING TEAM. ALL THE ABOVE DISHES ARE SUBJECT TO AVAILABILITY.

LUNCH MENU



Christleton Primary School

